

FISHWAY STATUS REPORT

Date: 4/9/2012
Inspection Period: 4/1 - 4/7/2012

THE DALLES DAM



**US Army Corps
of Engineers**
Portland District

The Dalles Project-Fisheries
P.O. Box 564
The Dalles, OR 97058-9998
Phone: 541-506-3800

Fishways are inspected twice daily. Additional daily monitoring done via automation system in fisheries office.

The Dalles Dam	Inspections Out of Criteria	Criteria Limit	Total Number of Inspections:	21	Temperature:	#DIV/0! F
			Comments	Secchi:	3.5	Ft.
NORTH FISHWAY						
Exit differential	0	≤ 0.5'				
Count station differential	0	≤ 0.3'				
Weir crest depth	0	1.0' ± 0.1'				
Entrance differential	0	1.0' - 2.0'	Average	1.4	Daily differentials & weir depths, see AVGS tab.	
Entrance weir N1	0	depth (≥ 8')	Average	9.8		
Entrance weir N2		Closed	Bulkhead installed			
PUD Intake differential	0	≤ 0.5'				
EAST FISHWAY						
Exit differential	0	≤ 0.5'				
Removable weirs 154-157	0	Per forebay	Auto adjusts 1' increments.			
Weir 158-159 differential	0	1.0' ± 0.1'				
Count station differential	0	≤ 0.3'				
Weir crest depth	0	1.0' ± 0.1'				
Junction pool weir JP6	0	depth (≥ 7')	Manually adjusted as needed.			
East entrance differential	0	1.0' - 2.0'	Average	1.5	Daily differentials & weir depths, see AVGS tab.	
Entrance weir E1	0	No criteria	Average	7.8	Manually adjusted.	
Entrance weir E2	0	depth (≥ 8')	Average	11.2		
Entrance weir E3	0	depth (≥ 8')	Average	11.2		
Collection channel velocity	0	1.5 - 4 fps	Average	2.1	See Velocities tab for more complete information.	
Transportation channel velocity	0	1.5 - 4 fps	Average	2.1	Note additional average velocity reading for fishways.	
North channel velocity	0	1.5 - 4 fps	Average	2.6		
South channel velocity	0	1.5 - 4 fps	Average	2.5		
West entrance differential	0	1.0' - 2.0'	Average	1.4		
Entrance weir W1	0	depth (≥ 8')	Average	9.0		
Entrance weir W2	0	depth (≥ 8')	Average	9.0		
Entrance weir W3	0	No criteria	Average	Closed		
South entrance differential	1	1.0' - 2.0'	Average	1.3	0.9' - manually adjusted to criteria.	
Entrance weir S1	0	depth (≥ 8')	Average	8.6	Daily differentials and weir depths, see AVGS tab.	
Entrance weir S2	0	depth (≥ 8')	Average	8.5		
JUVENILE PASSAGE						
Sluiceway operation	0	units 1,8,18				
Turbine trashrack drawdown	0	<1.5', wkly	Range:	0.2' - 0.7'		
Spill volume	0	40%, 24hr	Average	37.8		
Spill Pattern	0	per FPP	Forced spill started Mar 29.			
Turbine Unit Priority	0	per FPP	Unit 12 and 19 out of service for maintenance			
Turbine 1% Efficiency	0	per FPP				

OTHER ISSUES:**THE DALLES****Birds:**

Very few birds around the project this week. See bird tab below for more information on species, location and numbers.
USDA to start gull hazing contract Apr15 with 8hr/day shore hazing.

Pikeminnow/Bass: Washington Department of Fish and Wildlife (WDFW) pikeminnow dam angling expected to occur May through September. Oregon Department of Fish and Wildlife (ODFW) expected to continue bass angling study as well. No coordination completed to date.

Operations:

Gatewell drawdown completed Apr 7. Unit trashrack differentials range 0.2' - 0.7' (within criteria).
Unit 7 and 8 RTS service for maintenance on T4 line. Unit 8-2 sluiceway chain-gate opened and unit 6-2 chaingate closed.
No power to north N1 weir Apr 3 am; PUD in bypass. Returned Apr 3 pm. Another outage planned for Apr 9.
OPM's, AO's and Project Fisheries, NWD Fish Policy Team to meet for implementation of the Fish Operation Plan (FOP) Apr 16.

Maintenance:

Weir JP6 at the junction pool would not raise; maintenance notified.
T4 (MU-7 and MU-8) out of service 0600 Apr 2 to 1700 Apr 5 for three year NERC/FERC testing. Unit 6-2 sluiceway gate open to replace 8-2.
Coordination underway for T1 (unit 1 and 2) maintenance outage for 3 weeks in October.
Unit 12 out of service for blade seal and overhaul. Return May3. Unit 19 out of service for digital governor and annual maintenance. Return Apr 26.
Spillgate 9 tagged out of service for seized trunnion pin. This gate considered last to operate of all the tagged out gates. Refer to pic tab.

Studies:

Supporting east fishway backup study as needed. Reviewing top two alternatives; deep intake near fishlock and siphon intake downstream fishway exit. Fishlock to be used as base 400 cfs flow, contingent on rehab work. Alternatives to supply remaining 1000 cfs source.
Supporting adult PIT tag installation as needed. Reviewing count station and weir alternatives. Count station appears most cost effective to date.

Research/Contractors:

University of Idaho approved for access to download half duplex PIT tag detector receivers at part of the Pacific Lamprey studies,

Pacific Northwest National Laboratory (PNNL) acoustic telemetry (JSAT) research ready for 2012. Equipment installed and tested. To start summer performance testing first week of June. PNNL security and safety pre-work meeting scheduled Apr 17.

PNNL starting monitoring Apr 9 for JSATS tagged Kelt being tagged in the tributaries above The Dalles Dam and monitoring through Bonneville Dam Tribal lamprey trapping collection to start mid summer. Count station access preparation behind picket leads underway.

Tribal sturgeon collection from cul-de-sac, no coordination contact to date.

WDFW visual fish counting started Apr1. Low fish numbers and low water clarity.

Approved by;
Ron D. Twiner
Operation Project Manager
The Dalles Dam

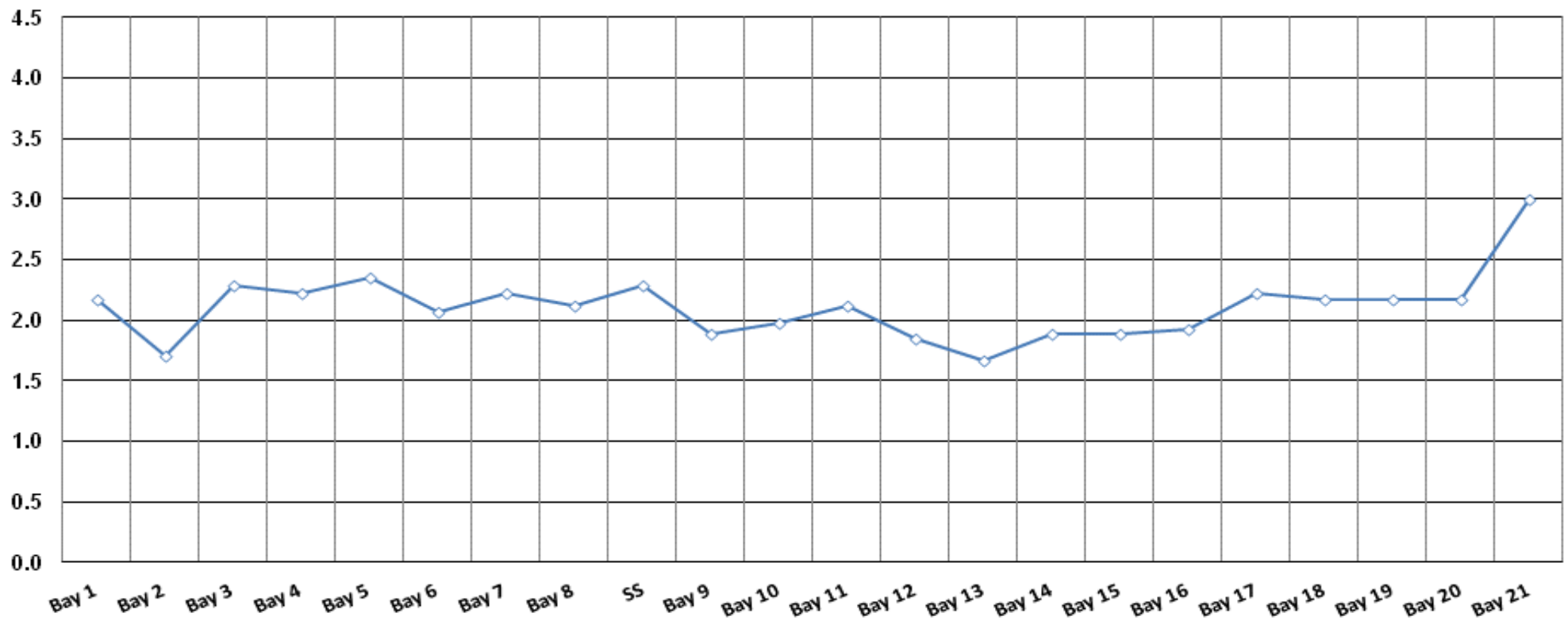
The Dalles Dam Fish Counts By Video

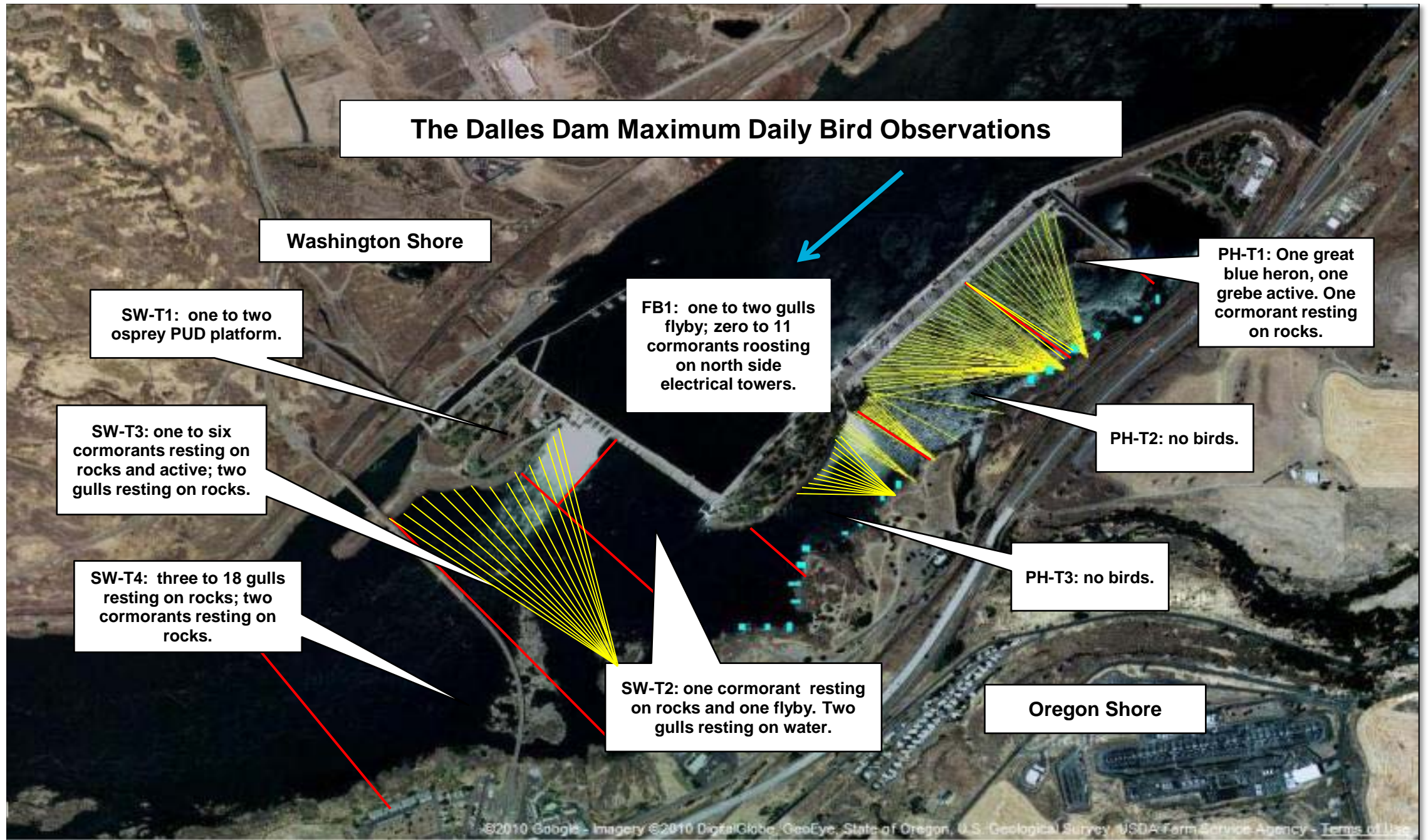
Date	East	North	East	North	Total	Total	East	North					East	North			East	North	Spill	
	Chinook	Chinook	Chinook	Chinook	East	North	Unclipped	Unclipped	East	North	East	North	Coho	Coho	East	North	East	North	Spill	
	Adult	Adult	Jack	Jack	Sthd	Sthd	Sthd	Sthd	Sock	Sock	Coho	Coho	Jack	Jack	Lamprey	Lamprey	Pink	Pink	KCFS	
1-Apr-12	0	1	0	0	31	6	14	5	0	0	0	0	0	0	0	0	0	0	0	140.0
2-Apr-12	1	0	0	0	58	5	36	1	0	0	0	0	0	0	0	0	0	0	0	118.6
3-Apr-12	0	0	0	0	53	3	25	1	0	0	0	0	0	0	0	0	0	0	0	138.7
4-Apr-12	1	0	0	0	45	0	26	0	0	0	0	0	0	0	0	0	0	0	0	109.9
5-Apr-12	4	0	0	0	25	0	18	0	0	0	0	0	0	0	0	0	0	0	0	101.3
6-Apr-12	1	0	0	0	24	4	14	4	0	0	0	0	0	0	0	0	0	0	0	100.7
7-Apr-12	4	0	0	0	29	0	19	0	0	0	0	0	0	0	0	0	0	0	0	110.3
Wkly Tot	11	0			265	18	152	11	0	0	0	0	0	0	0	0	0	0	0	
% Split	100.0%	0.0%	0.0%	0.0%	93.6%	6.4%	93.3%	6.7%	0.0%	0.0%	0.0%	0.0%	0.0%	0.0%	0.0%	0.0%	0.00%	0.00%		

Spill range: 109.9 - 140.0 KCFS (forced spill)

The Dalles Dam Collection Channel Velocities (fps)

4/7/2012





Starting data collection under new bird observation format. Shared data base being developed for real time viewing.

Temp:		SUN	3.5
		MON	3.0
		TUES	4.0
		WED	4.0
		THUR	4.0
		FRI	4.0
		SAT	2.3
AVG:	#DIV/0!	AVG:	3.5

The Dalles Dam Daily Readings and Averages for
Temperatures, Secchi, Entrances, and Spill

North Fish Ladder			East Fish Ladder												
North Entrance			East Entrance					West Entrance				South Entrance			
Date:	Differential	N1 Depth	Differential	E1Depth	E2 Depth	E3 Depth	JP 6	Differential	W1Depth	W2 Depth	W3 Depth	Differential	S1 Depth	S2 Depth	% Spill
1-Apr-12	1.4	9.8	1.6	6.6	11.4	11.5	14.1	1.3	9.1	9.2	Closed	1.2	9.0	8.9	
1-Apr-12	1.4	9.7	1.4	7.0	11.6	11.6	15.5	1.6	9.0	8.9		1.4	9.0	9.1	
1-Apr-12			1.5	7.0	11.6	11.6		1.6	8.9	8.9		1.5	8.9	9.0	
2-Apr-12	1.4	9.6	1.6	6.8	11.5	11.5	13.9	1.3	9.1	9.0		1.3	8.5	8.5	40.9
2-Apr-12	1.4	9.9	1.5	6.7	11.6	11.6	14.5	1.4	9.1	9.1		1.4	8.6	8.5	
2-Apr-12			1.6	6.7	11.4	11.5		1.3	9.1	9.1		1.4	8.5	8.5	
3-Apr-12	1.4	9.8	1.3	6.7	11.4	11.5	13.4	1.1	9.0	8.9		0.9	9.9	9.4	
3-Apr-12	No power to north.		1.5	6.7	11.6	11.6	13.7	1.4	9.0	9.0		1.3	8.6	8.5	42.4
3-Apr-12			1.6	6.7	11.4	11.4		1.2	9.1	9.1		1.2	8.6	8.5	
4-Apr-12	1.4	10.0	1.6	8.0	11.0	11.0	15.1	1.5	9.0	9.0		1.2	8.5	8.5	39.6
4-Apr-12	1.4	10.1	1.5	5.9	11.0	11.0	14.4	1.8	8.6	8.6		1.3	8.5	8.5	36.3
4-Apr-12			1.6	6.0	11.0	11.1		1.6	9.0	9.0		1.4	8.5	8.5	
5-Apr-12	1.4	9.8	1.5	8.0	11.0	11.0	15.2	1.3	9.1	9.1		1.2	9.1	8.4	36.6
5-Apr-12	1.5	9.2	1.4	8.0	11.0	11.0	14.4	1.4	9.0	9.0		1.3	8.2	8.2	38.8
5-Apr-12			1.5	8.0	11.0	11.0		1.4	8.9	8.9		1.2	8.2	8.2	
6-Apr-12	1.4	10.0	1.7	8.5	11.0	10.9	14.6	1.5	9.0	8.9		1.5	8.2	8.2	35.0
6-Apr-12	1.4	9.9	1.8	11.0	11.0	11.0	17	1.5	9.0	9.0		1.4	8.3	8.2	
6-Apr-12			1.8	9.0	11.0	10.9		1.7	9.0	9.0		1.6	8.3	8.2	
7-Apr-12	1.4	10.1	1.2	10.9	10.9	10.9	15.1	1.5	9.0	9.0		1.4	8.3	8.3	35.2
7-Apr-12	1.4	9.9	1.5	8.4	10.9	11.0	14.8	1.5	9.1	8.0		1.4	8.2	8.2	35.2
7-Apr-12			1.3	11.0	11.2	11.2		1.5	9.3	9.3		1.4	8.2	8.2	
AVG:	1.4	9.8	1.5	7.8	11.2	11.2	14.7	1.4	9.0	9.0	Closed	1.3	8.6	8.5	37.8

Third fish way inspection for east fish ladder, east, west, and south entrances completed via automation system in fisheries office.



Spillgate 9 seized trunnion pin. Gate tagged out of service.

°F

The Dalles River/Water Temperatures

— East Fish Ladder — North Fish Ladder — USGS Forebay — USGS Tailwater

